

(7A) Test Review

#6 $\frac{2}{4} + \frac{3}{10} = \square$

$50\% + 30\% = 80\%$

$\frac{2}{10}$ 20% $\frac{1}{5}$

$$\frac{15}{4}$$

$$\begin{array}{r} 4 \overline{) 15} \\ \underline{-12} \\ 3 \end{array}$$

3
413

#10

$\frac{3}{7}$ of 35

$$35 \div 7 = 5$$

$$5 \times 3 =$$

15

$$\frac{5}{24} + \frac{4}{24} = \frac{9}{24} = \frac{3}{8}$$

$$\frac{9}{24} = \frac{1}{3} = \frac{1}{3}$$

1, 2, 3, 4, 6, 8, 12, 24

#1

$$\begin{array}{r}
 101 \\
 86 \\
 49 \\
 + 72 \\
 \hline
 308
 \end{array}$$

$$\begin{array}{r}
 77 \\
 4 \overline{) 308} \\
 \underline{28} \\
 28 \\
 \underline{28} \\
 0
 \end{array}$$

#7

40 1, 2, 4, 5, 8, 10, 20, 40

36 1, 2, 3, 4, 6, 9, 12, 18, 36

1, 2, 4

#2

$$\frac{3}{4} \times 2 = \frac{6}{8}$$

U → 40 puzzles
↳ 5 units of 8
↳ 6 puzzles a day
↳ 6th puzzle final of unit
↳ how many puzzles



- make a list
- list last puzzles
- list end of unit puzzles

S

Day 4
finish
Unit 3 -
She will
complete

8
Unit 1
16
u2

24
u3

32
u4
24
p
40
u5

6
d1
12
d2

18
d3

24
d4

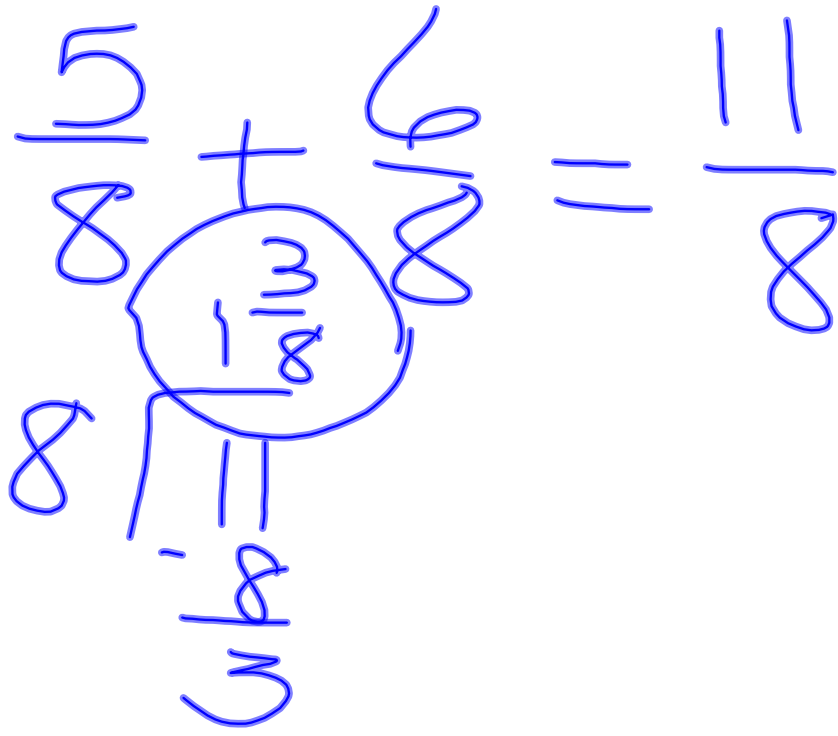
30
d5

36
d6

$$\frac{8}{10} - \frac{6}{10} = \frac{2}{10} = \frac{1}{5}$$

2 (1, 2)

10 (1, 2, 5, 10)



$$\frac{1}{2} \frac{v_1 - v_2}{v_1}$$

