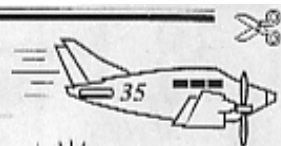


# Arithmetic Developed Daily → 5



Name \_\_\_\_\_

$6.75 + 30.54 + .87 =$

38.16

$951 - 63 =$

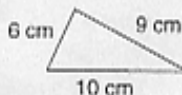
888

Reduce

$\frac{8}{10} = \frac{4}{5}$

$\frac{20}{24} = \frac{5}{6}$

Find the perimeter



$P = 25 \text{ cm}$



200



$\frac{1}{5} = \frac{2}{10}$



37

Angela bought four boxes of cookies for \$3 each and a carton of milk for \$1.20. How much did she spend?

*Thought*

$x + 6$

*Information*

4, \$3, \$1.20

*Plan*

$(4 \times \$3) + \$1.20 =$

*Solution*

\$13.20

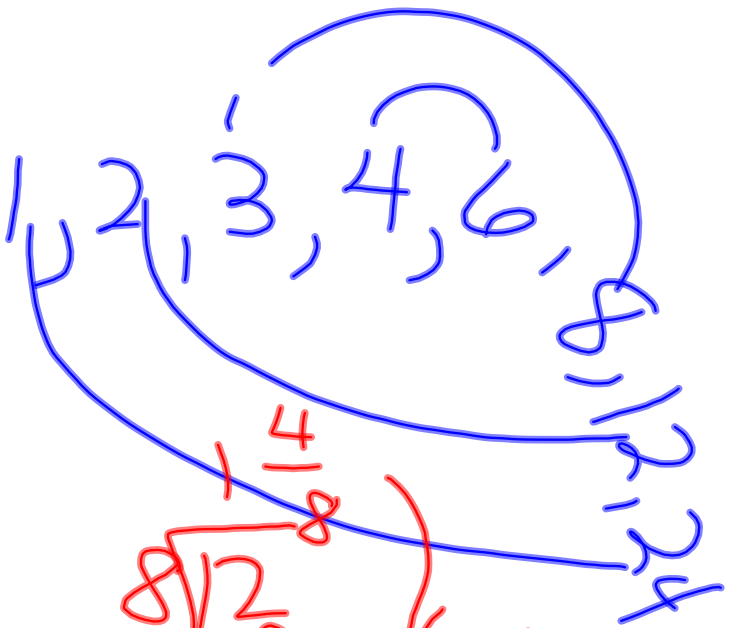
$$\frac{3 \times 6}{5 \times 10}$$

$$\frac{8}{10} \quad \text{①, ②, 4, 8}$$

$$\text{GCF} = 2$$

$$\frac{8 \div 2}{10 \div 2} = \frac{4}{5}$$

24



$$\frac{15}{8} + \frac{7}{8} = \frac{12}{8}$$

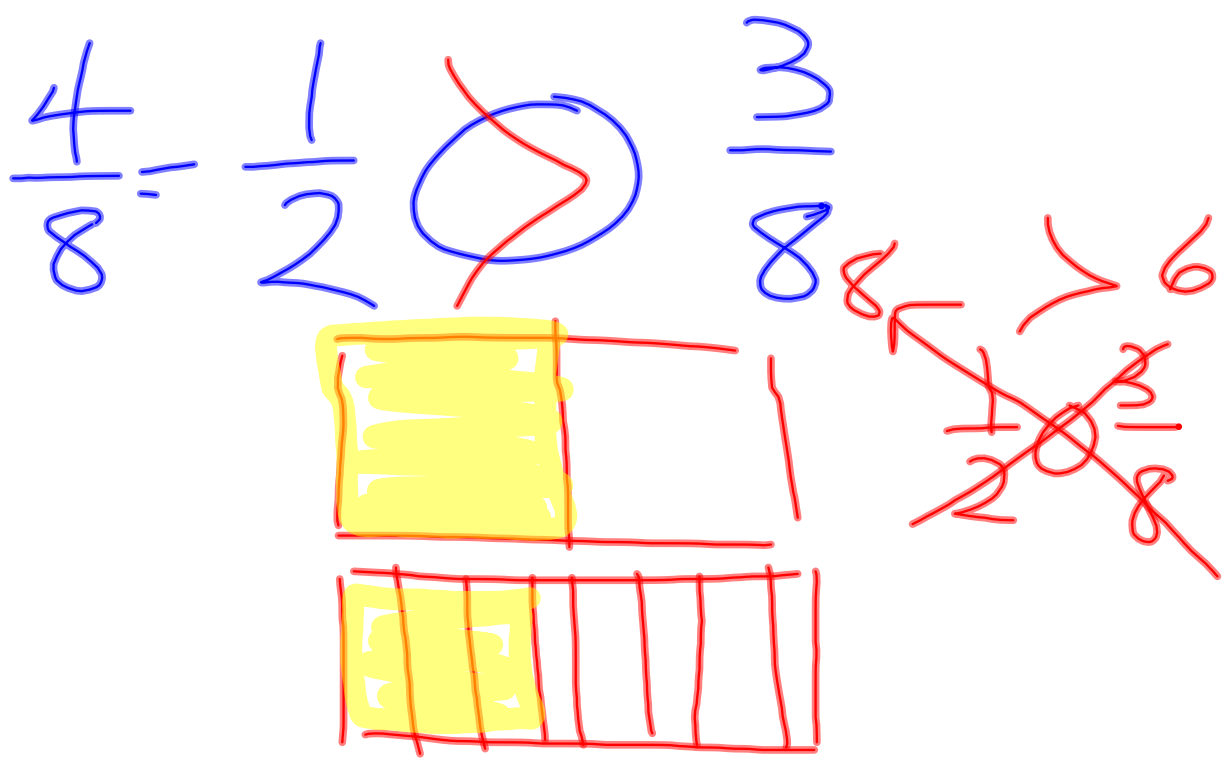
$$\frac{12}{8} = \frac{4}{2} = 2$$

$$\begin{array}{r}
 9 \overline{) \$4.59} \\
 \underline{4} \phantom{0} \\
 0 \phantom{0} \\
 \underline{0} \phantom{0} \\
 0 \phantom{0} \\
 \underline{0} \phantom{0} \\
 0
 \end{array}$$

|    |   |   |   |   |
|----|---|---|---|---|
| \$ | 0 | . | 5 | 1 |
|----|---|---|---|---|

X

⊕



$$\frac{16}{6} \quad 6 \sqrt{\frac{16}{6}} \quad 2\frac{4}{6}$$
$$2\frac{4}{6} = 2\frac{2}{3}$$

$$\frac{3}{5} \text{ of } 35 =$$

$$(35 \div 5) \times 3 = 21$$

25% of 20

$\frac{1}{4}$  of 20

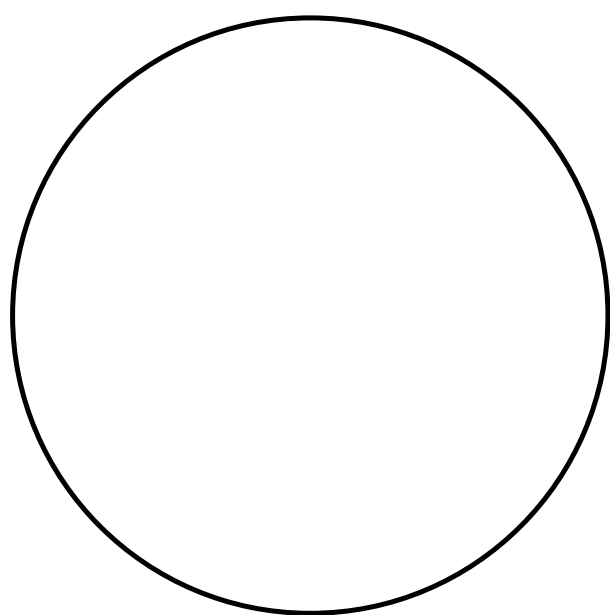
10% of 30

$\frac{1}{10}$  of 30

3

5

$$\begin{array}{r} \phantom{-} \phantom{\$} \phantom{4} \phantom{0} \phantom{.} \phantom{0} \phantom{0} \\ \phantom{-} \phantom{\$} \phantom{3} \phantom{9} \phantom{9} \\ \phantom{-} \phantom{\$} \cancel{4} \cancel{0} \phantom{.} \cancel{0} \cancel{0} \\ - \phantom{\$} \phantom{8} \phantom{.} \phantom{2} \phantom{1} \\ \hline \phantom{-} \phantom{\$} 31 \phantom{.} 79 \end{array}$$



○

